

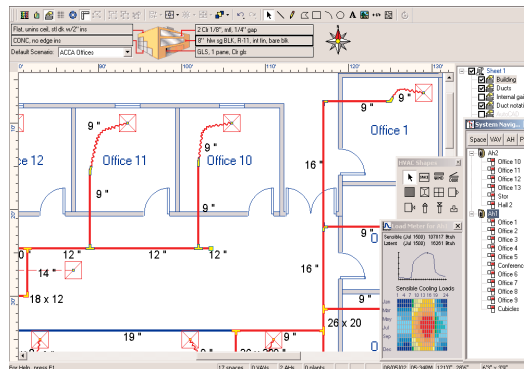
**Wrightsoft Corporation
Summer 2002**

TABLE OF CONTENTS

POWERFUL NEW COMMERCIAL UPGRADE	1
NEW WORLD OF ON-LINE TRAINING	1
RIGHT-SUITE COMMERCIAL 2-LINE DESIGN	2-3
HV-DUCT UPDATE	2
RIGHT-J8 UPDATE	2
CUSTOMER PROFILE AND TRAINING: "RIGHT-SUITE COMMERCIAL DESIGNS...":	3
BILL'S THOUGHTS ABOUT SOFTWARE (FULL PAGE LCD)	3
RIGHT-SUITE NETWORK VERSION	4

NEW! RIGHT-SUITE COMMERCIAL UPGRADE

A greatly enhanced Right-Suite Commercial (RSC) version 5.8 is now shipping. This major upgrade provides significant increases in capabilities, with improvements in duct drawing, calculation speed, and a new diagnostic duct capability.



BIG SPEED INCREASE

Designers of large projects will appreciate the big increase in computation speed. By rewriting the duct computations, and by re-organizing the internal structure of the duct sizing calculations, Right-Suite Commercial now takes less than one second to do the same number of ducts that used to take 10 seconds for recalculation. This is a real feat, since the calculations are actually doing considerably more than before. New features (see the article "Estimating Commercial Retrofit Projects: How Software Can Help" under "News" on www.wrightsoft.com) require more sophisticated analysis in order to provide automated register sizing, color coding of overlaps,

and diagnostics. Right-Suite Commercial now crunches duct sizes at a rate of over 500 ducts per second (equal friction).

EXISTING DUCT ANALYSIS

One of the most useful new features of Right-Suite Commercial v5.8 is the ability to force the size of any duct in the system, and then to see what pressure is required to satisfy the load. You can use this simple idea to solve several real-world problems:

1) **Expanding or diagnosing existing systems.** By entering an existing system layout, and then specifying which ducts must use existing sizes, you can quickly investigate how much of an existing system you can keep and which parts you will have to change out.

Furthermore, RSC can now show existing ducts in one color and new ducts in another color, and will list only the new parts in the Bill of Materials. In other words, this new feature is designed for retrofitting of existing systems. See the article on a real example of this on our website.

2) Occasionally in a new design you have to run a chase or trunk or even a branch through a **restricted size hole**. In these situations, you just can't find a way to get a bigger duct. The question becomes, even though the design would call for a larger duct, what happens when you put in the restricted size?

(Continued on Page 2)

NEW WORLD OF ON-LINE TRAINING

Wrightsoft has been experimenting with on-line training. Using the Internet, we are able to broadcast lessons from our training sessions to multiple attendees. Using their Web-browser, an attendee can see the instructor's computer desktop. In addition, if your computer has sound, you can tune in to the instructor's voice. Trainees can ask questions on-line by typing into a chat window. To host the system, we've

installed a special server, and have completed several experimental sessions to see how well the system works: It works great! We hope to use our Web on-line training system in sales, tech support, and for scheduled on-line sessions. Watch our website for more information, and for a special sign-up page to reserve a spot in an on-line class. We expect this new medium to save a great deal of time for our customers.

Wrightsoft offers a wide range of training as well as a 30-day money back guarantee and free unlimited technical support!

wrightsoft™

THE LEADER IN HVAC
DESIGN AND SALES SOFTWARE

COMING SOON! RIGHT-SUITE COMMERCIAL 2-LINE CAD Quality Ductwork:

Right-Suite Commercial has a new module which can produce 2-line plan views of HVAC ductwork. This important new module will release this September...to reserve your copy now, call Wrightsoft sales at 800-225-8697.

WRIGHTSOFT AT THE SHOWS

Vist us at Comfortech in Baltimore, MD this coming September 11, 12, 13 to see live demonstrations of Right-Suite Residential and Right-Suite Commercial.

Upcoming Trade Shows:

- **HVAC Comfortech 2002**
Baltimore, MD
September 11-13, 2002

- **RSR TRAINING 09/11: HYATT
REGENCY INNER HARBOR**

- **RSC TRAINING 09/12: HYATT
REGENCY INNER HARBOR**

- **AHR EXPO 2003**
Chicago, IL
January 27-29, 2003

RIGHT-SUITE COMMERCIAL CONT..

With RSC's new feature, you just right click on the duct, pop up the property sheet, change the duct to *existing*, and then enter the size of the duct. You'll see the fan pressure required, and other ducts will adjust in size to make your restricted duct work.

3) Another important use of the duct diagnostics feature is to first design a new duct system with a standard calculation method, such as Modified Equal Friction, and then re-calculate the newly sized system with the Existing System method. You'll immediately see how real-world size rounding will affect air quantity at each register. In other words, you'll have a *preview of balancing* requirements.

COMMERCIAL UPGRADE FEATURES:

EASY, AUTOMATIC MULTI-LEVEL DUCT SYSTEMS

- Trunks on one level
- Risers for supply & return
- Automatic risers - just drag into place

GREATLY ENHANCED DUCT DETAILS

- Improved readability of duct system
- Scaled actual register shapes
- Flex duct and junction boxes
- Duct fitting shapes shown by actual type
- Interior insulation in ductwork

NEW DUCT DESIGN FUNCTIONALITY

- As-Built duct analysis mode
- Duct remodeling mode
- Automatic register sizing
- Duct liner computation

FASTER, MORE DETAILED DRAWING

- Freeze layer
- Improved orientation control
- Rotation of catalog items and zones
- New duct symbols
- Multi-select grouped objects
- Automatic focus shift

PROFESSIONAL & REALISTIC FLOOR PLANS

- Actual wall layout (no register rooms)
- Architectural door symbols
- Exterior wall shading with Two Lines
- Custom wall openings
- Architectural Library: fixtures & furniture: includes a complete catalog of bathroom & kitchen appliances

IMPROVED DESIGN INTEGRATION

- Auto linkage of ventilation and internal gains
- New ASHRAE 12 month weather data



RIGHT-J8 UPDATE:

Wrightsoft began shipping Right Suite Residential J8 Professional Edition in June 2002. If you missed the last edition of our newsletter, you missed our announcement of this major new product which automates the first new residential load calculation method available since 1986.

As the exclusive technical software developer for Air Conditioning Contractors of America (ACCA), Wrightsoft developed and released Right-J8 in conjunction with ACCA's release of the new Manual J Eighth Edition. Right-J8 and Manual J Eighth Edition offers greater accuracy in load calculation with improved equipment sizing loads; new sensitivities and improvements in calculations as well as thousands of new material types. For more information on Right-J8, visit our website at www.wrightsoft.com/pe or click on "news" to read more about Right-J8.



HV-DUCT UPDATE:

Just like Right-J8, Right-HV Duct began shipping in June 2002 as an important new residential design module. In case you missed it in the last newsletter, HV-Duct was developed in a partnership between Unico Corporation and Wrightsoft.

Right-HV Duct automates the process of designing high-velocity, small diameter duct systems by following industry-standard design rules and calculations. When HV-Duct and Right-Quote are used together, high velocity duct system designers will automatically print out a complete parts list for a system. HV-Duct knows where to place registers within a room and can design whole trunk systems, such as Horseshoe, Dogleg and Perimeter.

Designers using Right-D and HV-Duct will now be able to choose between a traditional low velocity system (Right-D) or a high velocity system. In large residences where both system types can be present, this will be a welcome flexibility. For more information visit www.wrightsoft.com and click on "news".

BILL'S HARDWARE/SOFTWARE CORNER

For all the years I have been using computers, it's always bothered me that I could only see half of a typed page. Especially when the monitor is shaped the same as the page, except that it's turned on its side. Early on, I noticed that specialty programs like desktop publisher programs could use special, high cost monitors that would put an entire page on the desktop at one time. And of course, those pesky Apple people had that ability with a monitor that flips 90 degrees whenever you wish.

Well, finally it's easy to get a full page on the screen. You need an LCD screen and a piece of software called Pivot Pro, from www.portrait.com. The software costs \$49.95, and works with essentially all versions of Windows. I have been using it for a year or so, and it has had no flaws on either Windows 2000, or XP Pro. Several LCD manufacturers offer a pivoting stand, so that you can flip it from vertical to horizontal. I have tried the software on a 15" LCD, and an 18" LCD, and either one puts a full size page on the screen that's very readable. You can get a nice LCD screen in the range of under \$400 these days.

The other half of my screen story is multiple screens on one computer. Several years ago, I wished that we could show our software on three screens. Not necessary, but it would allow us to

demonstrate what was happening on the worksheet simultaneously with the drawing program. (At first, prospects were suspicious that Right-Suite could really draw and compute at the same time.) Once I tried it out for a trade show, I was hooked for every day use. I have found that I have to have at least two monitors to use Windows, or I feel like I am trapped inside a barrel.

To have a desktop spread across multiple screens, all you need are multiple video cards, and to plug them into your computer. Each video card has its own monitor. This works smoothly on Windows 98 or higher. I would suggest Windows 2000 Professional or XP Pro, but it does work on others. There are a few secrets - one is to use all the same video card, and to use PCI cards, not AGP cards. In fact, I have found that ATI Xpert 128 PCI cards, which are now down to about \$35, work great. You can have up to 9 monitors. (my max so far is 3). Start with only one, and then shut down and add the others, one at a time. You'll love having a desktop that has multiple program windows, full size, all at once. And Pivot with Windows 2000 lets you mix portrait and landscape formats, so one screen will be great for Word, and one will be great with Excel, and the other one will be great for Internet surfing.



RIGHT-SUITE COMMERCIAL DESIGNS RESEARCH LABS

Chud Wright (no relation to Wrightsoft!) is a mechanical engineer who, along with 9 other engineers at the S.A.I.C. Facilities, Maintenance and Engineering office at Fort Detrick MD, uses Right-Suite Commercial (RSC) to design changes to the research facilities at this national center for AIDS and cancer research. Chud estimates his team, which operates 8 Right-Suite Commercial work stations, undertakes as many as 100 commercial retrofit, renovation and new laboratory construction designs each year. "HVAC really drives the design of these laboratories...some of them are as large as 500,000 square ft and contain specialized medical research equipment...since it's based on ASHRAE methods we use Right-Suite Commercial for a variety of purposes including the load calculations for these structures." Chud likes the material types presented in RSC and especially likes the variety of reports which present information in a wide variety of formats. "We found Right-Suite Commercial to be less cumbersome and to have far better reports than most other commercial HVAC design packages" he comments. Chud attended one Wrightsoft RSC training in Boston, which in turn led him to set up an on-site training at his offices in Maryland. Marco Mello, Wrightsoft's training manager taught a two day on-site class in the use of RSC. Chud commented "It was more cost effective to have Wrightsoft come to us. Marco is an excellent trainer who explains things in terms everyone can understand...he makes sure each question is addressed by the end of the session. With support like the trainings you offer, we look forward to long term use of RSC." When asked what he'd like most to see next in RSC, Chud comments "The 2-line design feature and the network version...we'd really like to have those."

WRIGHTSOFT TRAINING SCHEDULE EXPANDS

The number of Wrightsoft trainings for both Right-Suite Residential™ (RSR) and Right-Suite Commercial™ (RSC) software is increasing dramatically in Fall 2002. Wrightsoft will be offering a full schedule of trainings in major locations of the U.S. for the months of September, October and November 2002. All of these trainings are "regional" trainings which typically entail a 2-day RSR training or a 1-day RSC training. Both current and potential customers are invited to attend these popular sessions. Also, Wrightsoft has expanded its capabilities for on-site trainings where our company comes to yours (see the "Right-Suite Commercial Designs Research Labs" article this issue). For more information email us at training@wrightsoft.com. For more information on training dates visit www.wrightsoft.com and click on "Training."

Upcoming Training Dates:

- **Aug. 13, Boston, MA**
(1-DAY, RESIDENTIAL SUITE, W/HV-DUCT)
- **Sept. 11, Baltimore, MD**
(1-DAY, RESIDENTIAL SUITE, BALTIMORE HYATT REGENCY INNER HARBOR)
- **Sept. 12, Baltimore, MD**
(1-DAY, COMMERCIAL SUITE, BALTIMORE HYATT REGENCY INNER HARBOR)
- **Sept. 18: Boston, MA**
(1-DAY, COMMERCIAL SUITE)
- **Sept. 19-20: Boston, MA**
(2-DAY, RESIDENTIAL SUITE)
- **Oct. 15-16: , Wood Dale, IL**
(2-DAY, RESIDENTIAL SUITE)
- **Oct. 17-18: , Wood Dale, IL**
(2-DAY, RESIDENTIAL SUITE)
- **Oct. 29-30: , Tempe, AZ**
(2-DAY, RESIDENTIAL SUITE)
- **Oct. 31-Nov 1: , Tempe, AZ**
(2-DAY, RESIDENTIAL SUITE)

Fax: (781)861-2058

Sales & Information:
(800)225-8697

Technical Support:
(781)862-8719,
ext. 140

Training:
(781)862-8719,
ext. 109

Website:
www.wrightsoft.com

Email:
sales@wrightsoft.com
support@wrightsoft.com
training@wrightsoft.com

Remember: For the latest demos of our Residential and Commercial software go to www.wrightsoft.com and click on "download demos"



RIGHT-SUITE NETWORK VERSIONS COMING SOON

Network versions of Right-Suite software are taking shape: we hope to complete testing by sometime in September. Right-Suite network versions will have several time-saving enhancements:

First, Right-Suite network versions will eliminate the need for separate license installations on workstations. If you have multiple licensed copies (or "seats"), the network version centralizes the management of those on one server. For example, you'll be able to do one install on the server, and then you'll be able to operate Right-Suite simultaneously from any combination of workstations (up to the number of network seats/user licenses you purchase). Each seat will then be able to operate Right-Suite software.

Second, you'll be able to centralize your projects and to know that the first user will lock the project, in a way similar to Microsoft Office. This means you can store all users' projects together in a common location for ease of retrieval.

Third, everyone can share the same database of parts for quotes. All quotes can have an entirely consistent source of pricing and parts lists. This enables you to centrally administer and control the Right-Suite database.

We are striving to make Right-Suite network capabilities to be flexible. For example, if you want central licensing control, but you want one workstation to have its own project files locally, that will be easy to do. If a network version would help your situation, please let your Regional Sales Manager know your needs, and we will try to make sure our developers can check to see if they have your situation covered.

DON'T MISS RSR AND RSC TRAININGS AT COMFORTECH!

Wrightsoft will be offering one-day intensive Right-Suite Residential and Commercial trainings at the upcoming September 2002 Comfortech show in Baltimore. The RSR class is on 9/11 and the RSC class is on 9/12. Classes will be held at the Hyatt Regency on Baltimore's Inner Harbor. These classes will cover use of Right-Draw, Right-J8, Right-D and Right-Quote as well as demonstrations of new modules such as Right-HV Duct (high velocity duct design) and new features in Right-Suite Commercial. For information on these trainings, which cost \$199 for the day, please email your requests to training@wrightsoft.com or phone 800-225-8697, ext 109.

wrightsoft™

394 Lowell Street
Lexington, MA 02420

