

Right-HVAC Tools:



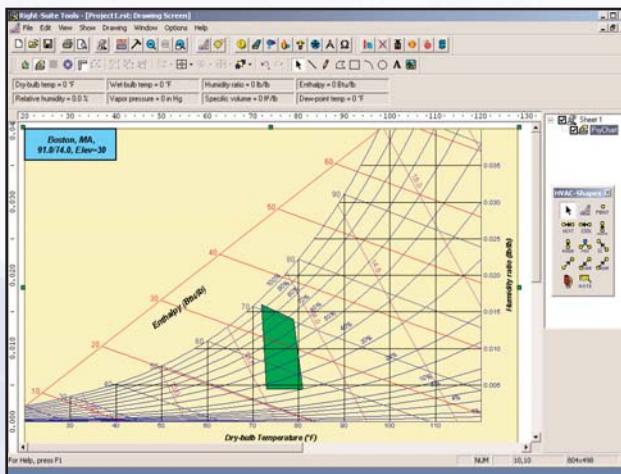
Right-HVAC Tools is a collection of calculators which are simple and yet so accurate that they generate charts in the ASHRAE handbook. To use Right-Tools, just click on the toolbar, and you'll immediately see a one-screen calculator for a specific type of calculation. As an example, let's say you want to know the velocity and size of a duct at 400 cfm. Just enter the cfm and the loss rate into the Right-Tools duct calculator and see an instant answer. Right-Tools calculators are laid out especially for HVAC applications. Using Right-Tools, you can print out a one-page report with a spot for cost and contractor information, job number, data and notes. That way, if you want to keep a record, it's easy to print out.

Partial List of Right-HVAC Tools Calculators:

- Loan Calculator
- Units Conversion
- Geometry Formulas
- Fuel Energy Values
- Ohm's Law Calculator
- Water Pipe Calculator
- Gas Pipe Calculator
- Wire Calculator
- Heat / Power Calculator
- Fan Law Calculator

A single point entry on the psychrometric chart is a convenient and concise representation of 7 properties of air: Dry Bulb Temperature, Wet Bulb Temperature, Relative Humidity, Humidity Ratio, Specific Volume, Enthalpy, and Dew Point Temperature:

Right-Psychrometrics:



Do you ever wish you that you could learn about Psychrometrics by just popping up a psychrometrics chart and selecting an HVAC process, like mixed air, without having to plod through a lot of work? Or that you could just drag a process onto the chart, and presto - there's the process all laid out and defaulted for your climate? Then we have the answer for you -- Right-Psychrometrics! Right-Psychrometrics enables you to chain processes together by just dragging the end point of one to the beginning of another. You can make up your own processes, and you can save them in the catalog. So even if you create a special combination -- like air handler with reheat (two processes chained together) -- you can save it in your catalog, and drag it out anytime you like. Now you'll be able to pull up a psychrometric calculation anytime you like, and even print it out in the colors you choose.