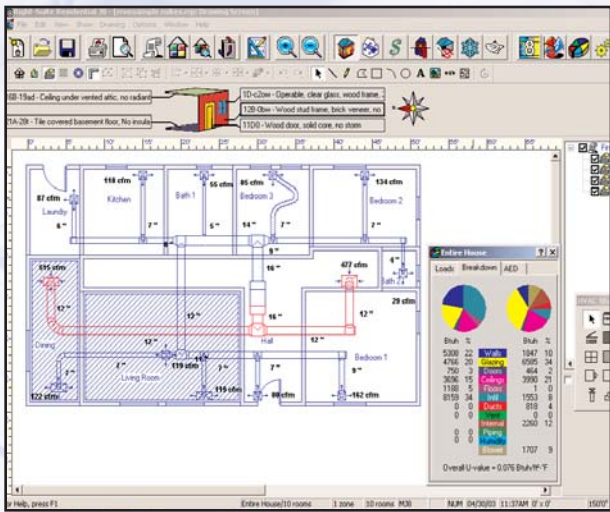


Right-Draw: Draw the Load!

Right-Draw is an innovative HVAC tool because it's totally integrated with Right-Suite Residential's load calculation, duct design and related radiant, geothermal, operating cost and proposal modules. Changes made to a building on screen are recalculated instantly in loads, ducts, and elsewhere.



Using Right-Draw you can quickly and simply draw a floor plan that can rapidly become your complete HVAC system design with parts take-off and job quote. Right-Draw gives you an easy, graphical way to describe your buildings, and provides a gateway into Automated HVAC Design.

Right-Draw provides you with the power to make your own drawing symbols, and to keep a library of them, in groups that you can name. You'll be able to have these on-screen in an easy-to-select palette for additional details. So you can use Right-Draw for other diagramming purposes...such as flow charts, organizational charts and space planning.

Right-Draw's HVAC-Shapes™ are very smart. You don't have to learn the complexities of CAD: just place your cursor on the Room Shape, and drag it over and drop it on the drawing. Right-Draw's HVAC-Shapes are smart because they're directly integrated with Right-Suite's fully integrated HVAC applications including Right-J8 loads, Right-D (low velocity duct), Right-HV (high velocity duct) and the radiant, geothermal, operating cost and quote modules.

When you drag-and-drop a smart Room Shape onto your drawing, the load for the room is instantly calculated. And when you drop doors or windows onto the walls of the room, the load instantly recalculates. And the ducts that are easy to draw on screen as either 1-Line or 2-Line instantly recalculate at the register as you change your design. If you're designing radiant systems, those calculations change instantly as well.

Right-Draw is easy to use and very interactive: As you draw, you'll see on-screen dimensions change as you stretch the room to size, and the materials in the room are on display at all times. The new on-screen load meter displays changes to heating and cooling loads as various components of the building change. To change materials, just select from Right-Suite's built in Manual-J Eighth Edition library of materials. and choose from thousands of window, door and wall types.

Right-Draw Makes it Easy!

Once you're done with your drawing, Right-Draw provides a complete project layout and printed design, with floor plan and the location of all your ducts, registers, radiant systems, and equipment. The multi-sheet control window is ideal for multi-level building designs.

You can have as many sheets as you need, and each sheet can have multiple layers as required. This way, you can do a multi-floor project with ease. With just one mouse click, you can turn on or off any layer, which means that you can check alignment between floors with ease. If you receive CAD drawings from architects, builders or others, Right-Draw has easy CAD import/export features which enable you to read CAD layers, turn off layers you don't want, draw a design over it and then save your building design or duct design onto the CAD layer.