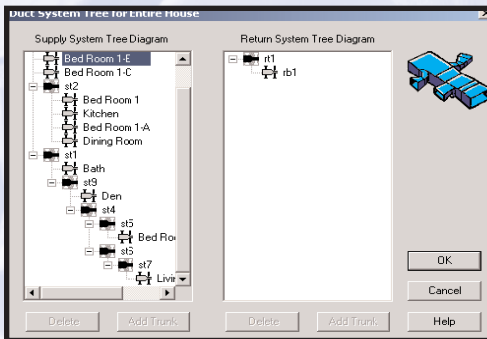


With thousands of copies in use, Right-D is a proven, reliable program which can improve the reliability and accuracy of your low velocity duct system designs. Right-D will handle multizone systems with or without diversity, extended plenum systems, radial systems, and flex-duct systems. You can use multiple materials and multiple fans.

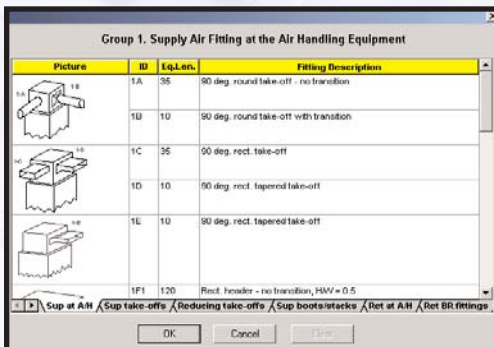
Right-D

Right-Suite Residential's Manual-D Duct Design Module

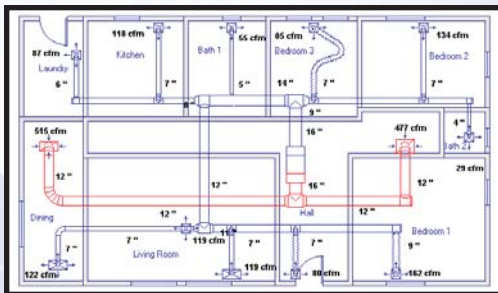
This fast, easy-to-use residential duct design software takes full advantage of ACCA's streamlined 1995 Manual D Method. Right-D handles multi-zone applications with and without diversity. The program includes automatic trunk reduction, branch splitting, recalculation for new duct materials, and computation of branches and trunk sizes.



Edit your duct systems from the duct system tree screen or modify them easily in the Right-Draw screen.



Right-D contains hundreds of duct fittings that correspond to ACCA's Manual-D duct database of fittings and cover a large range of angles and types. Fittings are automatically selected for the designer based on the duct system design and displayed as 1-Line or 2-Line.



When used with the new "2-Line Duct Design" module, Right-D can produce 2-Line and mixed 1-Line/2-Line duct plan views

New for 2003: 2-Line Duct and Fitting Design Capability (with the purchase of the Right-Suite 2-Line Duct Design Module).

- ACCA approved software version of Manual-D
- Single zone or multizone
- Multizone with or without bypass
- Multizone systems with or without diversity
- Sheet metal, duct board, corrugated metal and vinyl flex
- Automatic branch splitting, or manual branch-by-branch mode
- Automatic trunk reductions
- Automatic resizing for high or low velocity
- On-Screen recal of any changes
- Use built-in fitting for longest run or use fixed value for friction
- Manual includes multiple examples for several systems
- Drag and Drop duct control for any branch or trunk
- Hot Linked to Right-J8 for automatic duct sizing
- Links to Microsoft Word for Custom reports
- Part of Right-Suite Project data
- Schematic tree diagram print out
- Picture library of more than 400 duct fittings
- Multi-floor color coded duct designs
- Flex duct and junction box design
- Automatic risers and risers for supply and return
- Scaled actual register shapes
- Duct fitting shapes by actual type
- New duct symbols and font control
- Duct error in red
- 2-Line design (with purchase of RSR 2-Line design module)