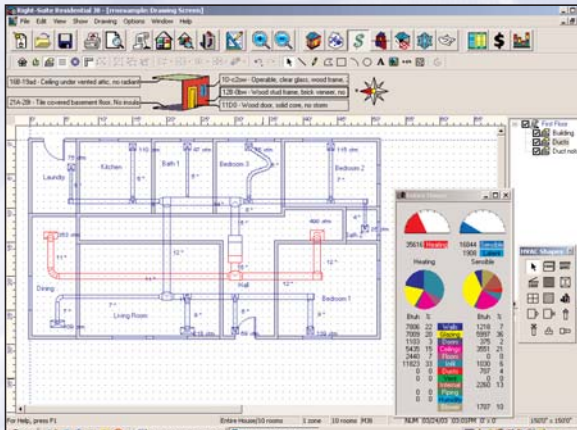


Right-J8 Loads: ACCA Manual J Eighth Edition Software



ACCA's MJ8 and Wrightsoft's Right-J8: First New Residential Load Calculation Method in 16 Years!

Wrightsoft and technical partner ACCA announce the availability of Right-Suite Residential J8 Professional Edition...a totally new and expanded standard method for calculating HVAC residential loads.

Major New Features and Enhancements in Right-J8:

Improved Equipment Sizing Loads for:

- Single-family detached homes
- Small multi-unit structures, condominiums and townhouses
- Manufactured homes

Many Sensitivities and Improvements in:

- Cooling loads for glass rated by the National Fenestration Rating Council (NFRC)
- Improved duct loss and gain models
- Improved methods for estimating the effect of internal and external shading devices, including insect screens
- Infiltration estimated based on blower door test
- Sensitivity to latitude and altitude
- Sensitivity to skylight glazing material, curb construction and light shaft construction
- Heat gain sensitivity to roofing material, roof color and the use of radiant barriers
- Heat loss and gain for log walls, structural foam panels, aerated concrete block, insulated form concrete panels, brick walls, concrete walls, wood foundation walls, and many other types of walls and insulation

Improved Calculations in:

- Below grade walls
- Radiant barriers in attics
- Peak loads for zoning

Thousands of New Material Types:

- Walls, windows, doors, roof types, window shading types and more

New AED Load Meter within Right-Draw/Right-J8:

- As you draw, the J8 Load Meter shows the total heating and cooling loads for the building and the total loads for walls, glazing, doors, ceilings, floors, infiltration, ducts, ventilation and hydronic piping.
- **Adequate Exposure Diversity (AED) Analysis:** Graphical presentation and selection of average or peak load calculation procedure for each zone.

Draw and design your building and the J8 worksheet is automatically filled in...no need to enter numbers into spreadsheets...Right-J8 is Manual J8 in software format!

Right-J8 Worksheet						
1		Room name			Entire house	
2		Exposed wall			170.0	
3		Ceiling height			8.0	
4		Room dimensions				
5		Room area			1750.0	
Ty	Construction number	U-value	Or	HTM (Btuh/ft²)	Area (ft²)	
	Select any cell then click here			Heat Cool	Gross N/P/S	
6	M 12C-2bw	0.081	n	4.860	0.437	280 259
	D 11G0	0.540	n	32.40	11.07	21 21
	M 12C-2bw	0.081	e	4.860	0.437	400 400
	M 12C-2bw	0.081	s	4.860	0.437	280 280
11	M 12C-2bw	0.081	w	4.860	0.437	400 320
	L 1E-c2fw	0.560	w	33.60	50.44	80 0
	C 16B-30ad	0.032	-	1.920	1.408	1750 1750
	F 22B-5tp1	0.289	-	17.34	0.000	1750 170
Envelope loss/gain						
12	a) Infiltration					
	b) Ventilation					
13	Internal gains	People @	230 (Btuh)			4
		Appliances @	1200 (Btuh)			1
	Less external load (Btuh)					
	Less transfer (Btuh)					
	Redistribution (Btuh)					
14	Subtotal					
15	Duct loads					
	Select a room, then click here					
					27 %	36 %
Total room load						
Air required (cfm)						

Right-J8 Worksheet is automatically filled in by Right-Draw. Right-J8 Worksheet is ACCA's Manual J8 Worksheet hot-linked to all Right-Suite Residential components: Draw, Duct, HV Duct, Radiant, Loop, \$ and Quote.